

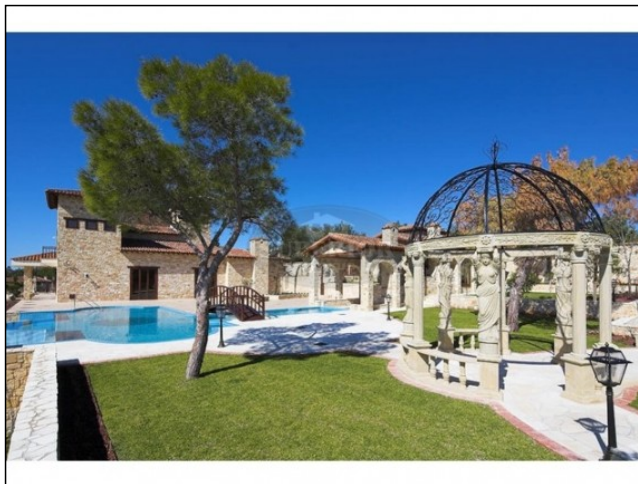
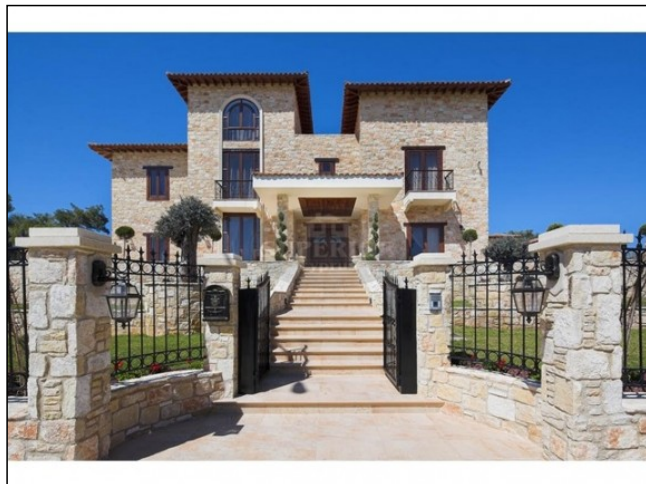


SUPERIOR REAL ESTATE - CYPRUS

93 Georgiou A4048 Potomos Germasogeias Shop 4, S&K Stylianos, Limassol

Free phone (Local): 8000 8000, Tel: +357 2531 2728, Fax: +357 2531 2147

Reference No. LI-5231



BDR villa for sale in Souni

EUR 0

City: Limassol

Area: Souni

Type: Villa

Pool: Private

Plot: 4351m²

Covered: 891m²

Title deeds: Yes

Sale type: New

Kitchen: Fitted

Parking: Private Covered

Views: Sea views

* Souni village * Main House: 511 sq.m, plus, Guest House: 380 sq.m * Total covered area (both houses): 891sq.m * Under construction * Plot: 4,351 sq.m * Swimming pool 6m x 12m * Stone-wall boundary with iron bars and 2.20m high electric gate remotely controlled entrance door - video/audio link to the building * Private water well/ borehole with a complete water system connected to private water well * Preparation for satellite and ADSL / Broad-band connections * Solar and electric water heating system * Pergola with electricity point and lighting * 250sq.m of Crazy paving * Preparation for 18 perimeter lights * Alarm System * Reclaimed roof tiles on top of specially imported corrugated cement-based sheets * Double glazed aluminium windows * Designer kitchen (available selection of designer kitchens) * Parquet wood in bedrooms * Ceramic tiles or marble downstairs * Central Heating * Air Conditioning * Sea & Mountain view from the 2nd floor * Completion: 8 months from signing the purchase agreement * Subject to VAT *

Located between mountain peaks, sunny vineyards and cool pine forests. Souni village is an area of pine-scented air, winding nature trails and scenic panoramas. A private road leads to this beautiful home with a 4,351 sq.m plot and two houses (main house 511sq.m and guest house 380sq.m).

The property offers a host of amenities like:

Swimming pool 6m x 12m (maximum depth of 1.6 meters).

Call +357 2531 2728 or email limassol@cyprus-realestate.net for more information

www.superiorrealestatecyprus.com (ENG) | www.superiorkipr.ru (RUS)

"Superior Cyprus" and "Superior Homes" are registered trademarks of HPL Superior Real Estate - Cyprus, Ltd.



SUPERIOR REAL ESTATE - CYPRUS

93 Georgiou A4048 Potomos Germasogeias Shop 4, S&K Stylianou, Limassol
Free phone (Local): 8000 8000, Tel: +357 2531 2728, Fax: +357 2531 2147

Stone-wall boundary with iron bars and 2.20m high electric gate remotely controlled entrance door - video/audio link to the building.

Preparation for irrigation system with a complete water system connected to own water well.

Preparation for satellite and ADSL / Broad-band connections.

Solar and electric water heating system.

A pergola with electricity point and lighting.

250m² of Crazy paving.

Preparation for 18 perimeter lights (lighting fixtures for in and outside the house will be supplied by the Purchaser).

Alarm System

Reclaimed roof tiles on top of specially imported corrugated cement-based sheets

Double glazed aluminium windows

Designer kitchen (You can choose from a selection of designer kitchens)

Parquet wood in bedrooms

Ceramic tiles or marble downstairs.

Central Heating

Air Conditioning

Call +357 2531 2728 or email limassol@cyprus-realestate.net for more information

www.superiorrealestatecyprus.com (ENG) | www.superiorkipr.ru (RUS)

"Superior Cyprus" and "Superior Homes" are registered trademarks of HPL Superior Real Estate - Cyprus, Ltd.