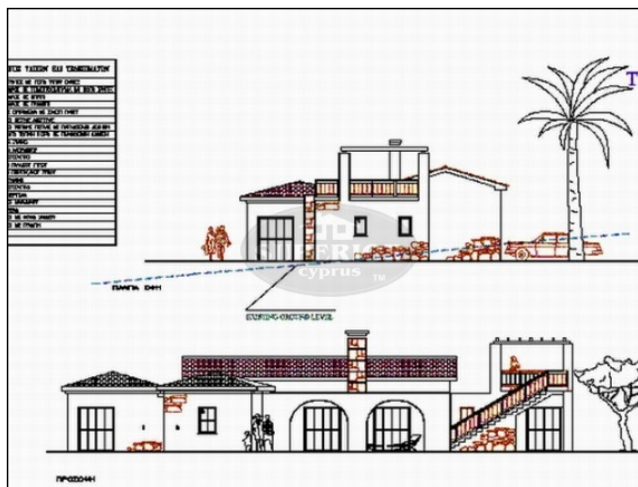




# SUPERIOR REAL ESTATE - CYPRUS

Shops 3-6, Laiki Bank Complex, 10 Apostolou Pavlou Ave, 8046, Paphos  
Free phone (Local): 8000 8000, Tel: +357 2695 5554, Fax: +357 2693 0610

Reference No. S-12107



## 3 BDR house for sale in Nata

**EUR 480,000**

City: Paphos

Area: Nata

Type: House

Bedrooms: 3

Bathrooms: 3

Pool: Private

Plot: 4624m2

Covered: 152m2

Title deeds: Yes

Sale type: New

Kitchen: Partly equipped

Furnished: No

Parking: Private Covered

Views: Mountain views

Delivery date: 2009

\* 3 bedroom detached villa \* Huge 4500sqm plot \* En-suite bathrooms \* Central heating \* Quiet countryside location

Near Kelokethera Village, twenty minutes from Paphos Airport (about 15km inland)

Twenty five minutes from Paphos

Plot is four or five minutes from the village

4624m2 plot, complete with water and electricity

Elevated location with open, panoramic views over the surrounding countryside and the Ziripillis Valley

Title deeds ready to transfer

### Development Summary

152m2, three bedroomed bungalow, designed to take full advantage of the views

Completely natural stone faced

Open plan Lounge / Dining / Kitchen 12.00 metres long

Two bedrooms en-suite

Visitors Full bathroom, adjacent to third bedroom

Shaded patio, outside the Lounge, with attractive stone arches

**Call +357 2695 5554 or email [paphos@cyprus-realestate.net](mailto:paphos@cyprus-realestate.net) for more information**

[www.superiorrealestatecyprus.com](http://www.superiorrealestatecyprus.com) (ENG) | [www.superiorkipr.ru](http://www.superiorkipr.ru) (RUS)

"Superior Cyprus" and "Superior Homes" are registered trademarks of HPL Superior Real Estate - Cyprus, Ltd.



## SUPERIOR REAL ESTATE - CYPRUS

Shops 3-6, Laiki Bank Complex, 10 Apostolou Pavlou Ave, 8046, Paphos  
Free phone (Local): 8000 8000, Tel: +357 2695 5554, Fax: +357 2693 0610

Roof terrace, with pergola and external stair. to take full advantage of the view.  
Swimming Pool and generous paved area  
Gravel drive and double carport

### Technical Specification

Reinforced concrete structure and floors and roofs. Roofs flat, and pitched with tiles  
External walls natural stone facing  
Internal walls block and plaster/emulsion paint finish - colour choice  
Ceilings - spatula, with white emulsion paint finish  
Fireplace, purpose built in natural stone  
Fitted wardrobes doors, stained panelled solid pine, cupboards stained veneered pine board  
Fitted Kitchen Granite kitchen worktops - EUR 85,00 / m<sup>2</sup>  
Kitchen cupboards stained veneered pine board, doors stained panelled solid pine  
Stained pine double glazed windows and french doors, or timber finish aluminium, with sliding doors  
Ceramic floor tiles throughout - EUR 14,00 /m<sup>2</sup>  
Ceramic wall tiles to bathrooms - EUR 14,00 /m<sup>2</sup> (2000mm high)  
Ceramic tile splashbacks to kitchen worktops - EUR 14,00 /m<sup>2</sup>  
Internal doors stained panelled solid pine, frames stained pine  
Standard electrical installation  
Provision for TV aerial cabling  
Provision for central heating (radiators)  
Provision for air-conditioning  
Swimming Pool 8m x 4.50m

**Call +357 2695 5554 or email [paphos@cyprus-realestate.net](mailto:paphos@cyprus-realestate.net) for more information**

[www.superiorrealestatecyprus.com](http://www.superiorrealestatecyprus.com) (ENG) | [www.superiorkipr.ru](http://www.superiorkipr.ru) (RUS)

"Superior Cyprus" and "Superior Homes" are registered trademarks of HPL Superior Real Estate - Cyprus, Ltd.