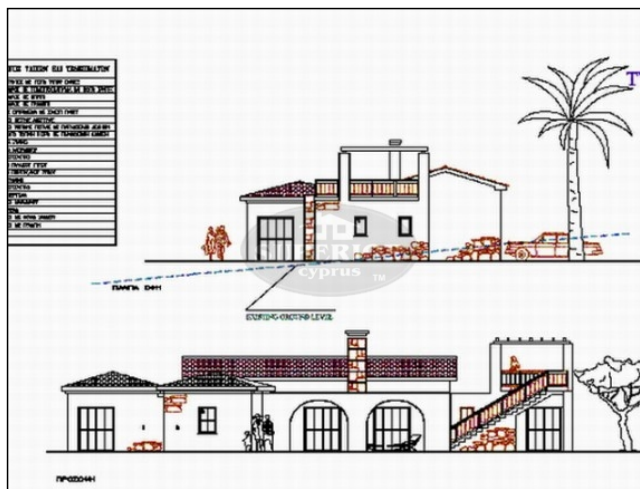




SUPERIOR REAL ESTATE - CYPRUS

Shops 3-6, Laiki Bank Complex, 10 Apostolou Pavlou Ave, 8046, Paphos
Free phone (Local): 8000 8000, Tel: +357 2695 5554, Fax: +357 2693 0610

Reference No. S-12109



4 BDR house for sale in Nata

EUR 705,296

City: Paphos	Covered: 200m2
Area: Nata	Title deeds: Yes
Type: House	Sale type: New
Bedrooms: 4	Kitchen: Partly equipped
Bathrooms: 4	Furnished: No
Pool: Private	Parking: Private Covered
Plot: 7948m2	Views: Mountain views

Delivery date: 2009

* 4 bedroom detached villa * Huge 7900sqm plot * En-suite bathrooms * Central heating * Quiet countryside location

Near Kelokethera Village, twenty minutes from Paphos

Twenty five minutes from Paphos Airport

Plot is four or five minutes from the village

7948m2 plot, complete with water and electricity

Elevated location with open, panoramic views over the surrounding countryside and the Ziripillis Valley

Title deeds ready to transfer

Development Summary

200m2, four bedroomed bungalow, designed to take full advantage of the views

Completely natural stone faced

Open plan Lounge/Dining/Kitchen

All bedrooms en-suite

Shaded patio, outside the Lounge, with attractive stone arches

Roof terrace, with pergola and external stair. to take full advantage of the view.

Call +357 2695 5554 or email paphos@cyprus-realestate.net for more information

www.superiorrealestatecyprus.com (ENG) | www.superiorkipr.ru (RUS)

"Superior Cyprus" and "Superior Homes" are registered trademarks of HPL Superior Real Estate - Cyprus, Ltd.



SUPERIOR REAL ESTATE - CYPRUS

Shops 3-6, Laiki Bank Complex, 10 Apostolou Pavlou Ave, 8046, Paphos
Free phone (Local): 8000 8000, Tel: +357 2695 5554, Fax: +357 2693 0610

Swimming Pool and generous paved area
Gravel drive and double carport

Technical Specification

Reinforced concrete structure and floors and roofs. Roofs flat, and pitched with tiles
External walls natural stone facing
Internal walls block and plaster/emulsion paint finish - colour choice
Ceilings - spatula, with white emulsion paint finish
Fireplace, purpose built in natural stone
Fitted wardrobes doors, stained panelled solid pine, cupboards stained veneered pine board
Fitted Kitchen Granite kitchen worktops - EUR 85,00 /m2
Kitchen cupboards stained veneered pine board, doors stained panelled solid pine
Stained pine double glazed windows and french doors, or timber finish aluminium, with sliding doors
Ceramic floor tiles throughout - EUR 14,00 /m2
Ceramic wall tiles to bathrooms - EUR 14,00 /m2 (2000mm high)
Ceramic tile splashbacks to kitchen worktops - EUR 14,00 /m2
Internal doors stained paneled solid pine, frames stained pine
Standard electrical installation
Provision for TV aerial cabling
Provision for central heating (radiators)
Provision for air-conditioning
Swimming Pool 8m x 4.50m

Call +357 2695 5554 or email paphos@cyprus-realestate.net for more information

www.superiorrealestatecyprus.com (ENG) | www.superiorkipr.ru (RUS)

"Superior Cyprus" and "Superior Homes" are registered trademarks of HPL Superior Real Estate - Cyprus, Ltd.