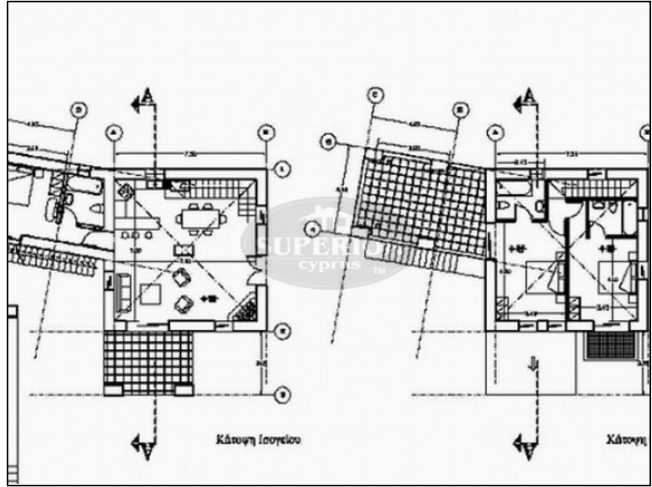




SUPERIOR REAL ESTATE - CYPRUS

Shops 3-6, Laiki Bank Complex, 10 Apostolou Pavlou Ave, 8046, Paphos
Free phone (Local): 8000 8000, Tel: +357 2695 5554, Fax: +357 2693 0610

Reference No. S-12113



3 BDR villa for sale in Nata

EUR 461,320

City: Paphos

Area: Nata

Type: Villa

Bedrooms: 3

Bathrooms: 2

Pool: Private

Plot: 6689m2

Covered: 156m2

Title deeds: Yes

Sale type: New

Kitchen: Partly equipped

Furnished: No

Parking: Private Covered

Views: Mountain views

Delivery date: 2009

* Village location * Huge 6600sqm plot * En-suite bathroom * Carport

Nata village, twenty minutes from Paphos

Plot is a five minute drive into the village

6689m2 plot, complete with water, electricity, and new access road

Spectacular south facing unobstructed countryside views over the Ziripilis Valley, well known for its many species of plant and wildlife

Close to Secret valley & Aphrodite Hills golf courses

Title deeds ready to transfer

Development Summary

156m2, three bedroomed house, designed to suit the plot.

En-suite master bedroom

Partial natural stone facing

Carport

Planning Approval

Price

Call +357 2695 5554 or email paphos@cyprus-realestate.net for more information

www.superiorrealestatecyprus.com (ENG) | www.superiorkipr.ru (RUS)

"Superior Cyprus" and "Superior Homes" are registered trademarks of HPL Superior Real Estate - Cyprus, Ltd.



SUPERIOR REAL ESTATE - CYPRUS

Shops 3-6, Laiki Bank Complex, 10 Apostolou Pavlou Ave, 8046, Paphos
Free phone (Local): 8000 8000, Tel: +357 2695 5554, Fax: +357 2693 0610

Technical Specification

Reinforced concrete structure and floors and roofs. Roofs flat, and pitched with tiles
Walls natural stone facing / graffiato coloured finish, all as per drawings
Internal walls block and plaster/emulsion paint finish - colour choice
Ceilings - spatula, with white emulsion paint finish
Fireplace
Fitted wardrobes doors, stained veneered MDF, cupboards white melamine
Fitted Kitchen
Granite kitchen worktops
Kitchen Cupboards white melamine
Kitchen cabinet doors stained veneered MDF
Stained softwood double glazed windows and French doors, or timber finish aluminum, with sliding doors
Ceramic floor tiles throughout
Ceramic wall tiles to bathrooms
Internal doors stained paneled softwood, frames stained softwood
Standard electrical installation
Provision for TV aerial cabling
Provision for central heating (radiators)
Provision for air-conditioning
Swimming pool 8m x 4.50m

Call +357 2695 5554 or email paphos@cyprus-realestate.net for more information

www.superiorrealestatecyprus.com (ENG) | www.superiorkipr.ru (RUS)

"Superior Cyprus" and "Superior Homes" are registered trademarks of HPL Superior Real Estate - Cyprus, Ltd.