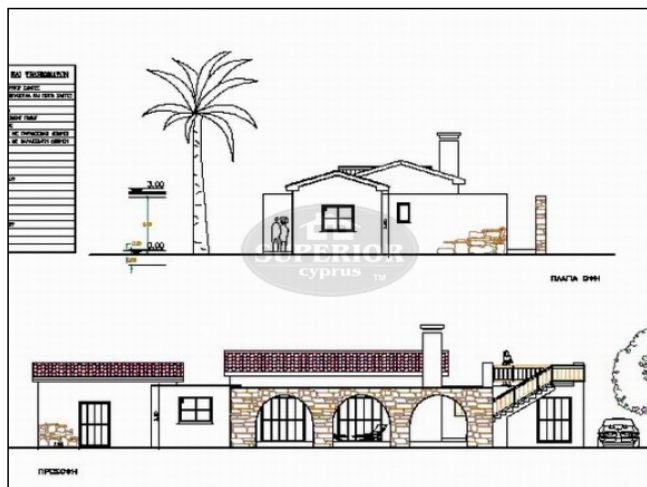




SUPERIOR REAL ESTATE - CYPRUS

Shops 3-6, Laiki Bank Complex, 10 Apostolou Pavlou Ave, 8046, Paphos
Free phone (Local): 8000 8000, Tel: +357 2695 5554, Fax: +357 2693 0610

Reference No. S-12114



4 BDR bungalow for sale in Lasa

EUR 578,600

City: Paphos	Covered: 200m2
Area: Lasa	Title deeds: Yes
Type: Bungalow	Sale type: New
Bedrooms: 4	Kitchen: Partly equipped
Bathrooms: 4	Furnished: No
Pool: Private	Parking: Private Covered
Plot: 3000m2	Views: Mountain views

Delivery date: 2009

* Village location * 4 bedroom bungalow * Huge 3000smq plot * Stone faced * Carport

Near Simou Village, twenty minutes from Paphos
Twenty five minutes from Paphos Airport
Plot is four or five minutes from the village
3000m2 plot, complete with water and electricity
Elevated location with open, panoramic views over the surrounding countryside and the Ziripillis Valley
Title deeds ready to transfer

Development Summary

200m2, four bedroomed bungalow, designed to take full advantage of the views
Completely natural stone faced
Open plan Lounge/Dining/Kitchen
All bedrooms en-suite
Visitors may use either bathroom as the separation has been designed accordingly
Shaded patio, outside the Lounge, with attractive stone arches
Roof terrace, with pergola and external stair. to take full advantage of the view.

Call +357 2695 5554 or email paphos@cyprus-realestate.net for more information

www.superiorrealestatecyprus.com (ENG) | www.superiorkipr.ru (RUS)

"Superior Cyprus" and "Superior Homes" are registered trademarks of HPL Superior Real Estate - Cyprus, Ltd.



SUPERIOR REAL ESTATE - CYPRUS

Shops 3-6, Laiki Bank Complex, 10 Apostolou Pavlou Ave, 8046, Paphos
Free phone (Local): 8000 8000, Tel: +357 2695 5554, Fax: +357 2693 0610

Swimming Pool and generous paved area

Gravel drive and double carport

Technical Specification

Reinforced concrete structure and floors and roofs. Roofs flat, and pitched with tiles

External walls natural stone facing

Internal walls block and plaster/emulsion paint finish - colour choice

Ceilings - spatula, with white emulsion paint finish

Fireplace, purpose built in natural stone

Fitted wardrobes doors, stained panelled solid pine, cupboards stained veneered pine board

Fitted Kitchen Granite kitchen worktops - EUR 85,00 /m2

Kitchen cupboards stained veneered pine board, doors stained panelled solid pine

Stained pine double glazed windows and french doors, or timber finish aluminium, with sliding doors

Ceramic floor tiles throughout - EUR 14,00 /m2

Ceramic wall tiles to bathrooms - EUR 14,00 /m2 (2000mm high)

Ceramic tile splashbacks to kitchen worktops - EUR 14,00 /m2

Internal doors stained panelled solid pine, frames stained pine

Standard electrical installation

Provision for TV aerial cabling

Provision for central heating (radiators)

Provision for air-conditioning

Swimming Pool 8m x 4.50m

Call +357 2695 5554 or email paphos@cyprus-realestate.net for more information

www.superiorrealestatecyprus.com (ENG) | www.superiorkipr.ru (RUS)

"Superior Cyprus" and "Superior Homes" are registered trademarks of HPL Superior Real Estate - Cyprus, Ltd.