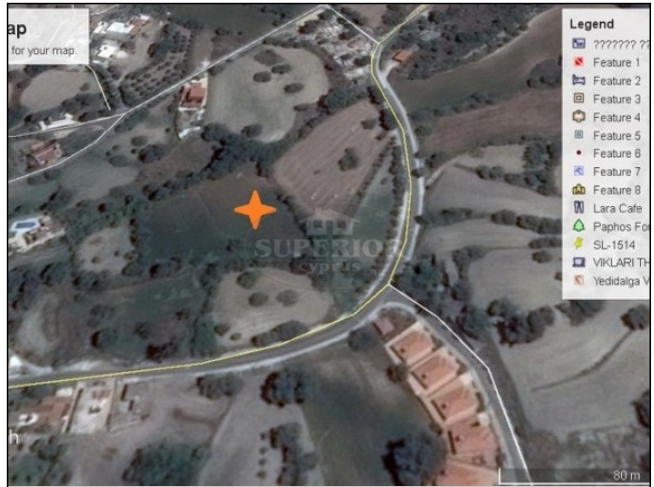
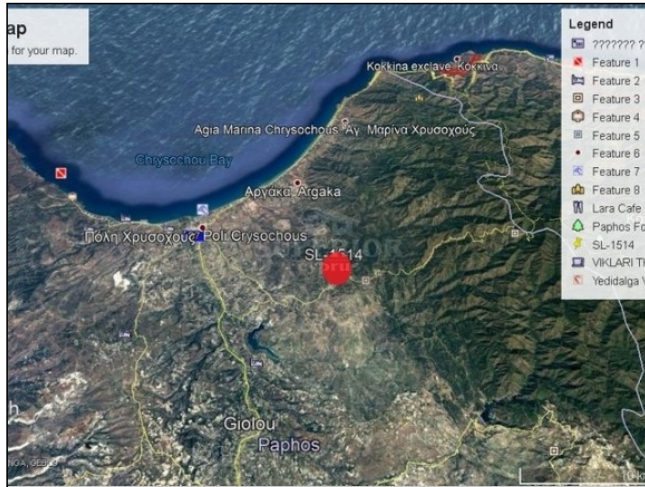




## SUPERIOR REAL ESTATE - CYPRUS

Shops 3-6, Laiki Bank Complex, 10 Apostolou Pavlou Ave, 8046, Paphos  
Free phone (Local): 8000 8000, Tel: +357 2695 5554, Fax: +357 2693 0610

Reference No. SL-1514



### Land for sale in Lysos

**EUR 212,000**

City: Paphos  
Area: Lysos  
Type: Land  
Plot: 3345m<sup>2</sup>

\* Residential Land \* Village Location \* Plot: 3,345m<sup>2</sup> \* Building Density 90% \* Coverage 50% \*  
Planning Zone H2 \* 2 Floors \*

Land on the outskirts of the peaceful village of Lysos.

Plot: 3,345m<sup>2</sup>

Building Density 90%

Coverage 50%

Planning Zone H2

2 Floors can be built.

200m to the centre of the village & restaurants

12km from Polis Chrysochous and Latch with all amenities and beaches.

Call +357 2695 5554 or email [paphos@cyprus-realestate.net](mailto:paphos@cyprus-realestate.net) for more information

[www.superiorrealestatecyprus.com](http://www.superiorrealestatecyprus.com) (ENG) | [www.superiorkipr.ru](http://www.superiorkipr.ru) (RUS)

"Superior Cyprus" and "Superior Homes" are registered trademarks of HPL Superior Real Estate - Cyprus, Ltd.